

*Collier*

**John Collier's 336 acres of 1779, containing the 100 acres  
sold to William Thomasson on October 3, 1793**

Surveyor's Book, No.1, Part 1, page 73 (1779)  
(in Henry County clerk's office, Martinsville, Va.)

Novem<sup>r</sup> 15 Surveyed for John Collier by Transfer from Joseph Gravley 336 Acres of  
Land on the Branches of the Fishing fork of Leatherwoods Creek & Bounded as  
follows (to wit) Beginning at the said Gravleys Pointers in former Line thence  
with Gravleys New line N15°E 160 p<sup>o</sup> to a post oak N36°E 59 p<sup>o</sup> to a post  
oak thence New line N17°W 252 p<sup>o</sup> crossing three Branches to a pine  
N65°W 132 p<sup>o</sup> to a Chestnut tree S 9°W 190 p<sup>o</sup> to a pine S 22°E 124 p<sup>o</sup>  
crossing a branch to a white oak at former Geo. line thence with it  
S 26°E 200 p<sup>o</sup> crossing two branches to the first Station.

Test John Dickenson Sr



William Thomasson bought  
100 acres of land on  
Leatherwood Creek in 1793

*This Indenture made this 3<sup>d</sup> day of October and in the  
year of our lord one thousand seven hundred & Ninety-three between  
John Collier of the County of Pittsylvania of the one part And  
William Thomasson of the County of Henry of the other  
Witnesseth that the said John Collier for and in Consider-  
ation of the sum of ten Pounds Current money of Virginia to him in  
hand paid by him the said William Thomasson ... doth deliver unto  
the said William Thomasson one certain Tract or parcel of Land  
on the branches of Leatherwood ... including one hundred Acres  
more or less ....*

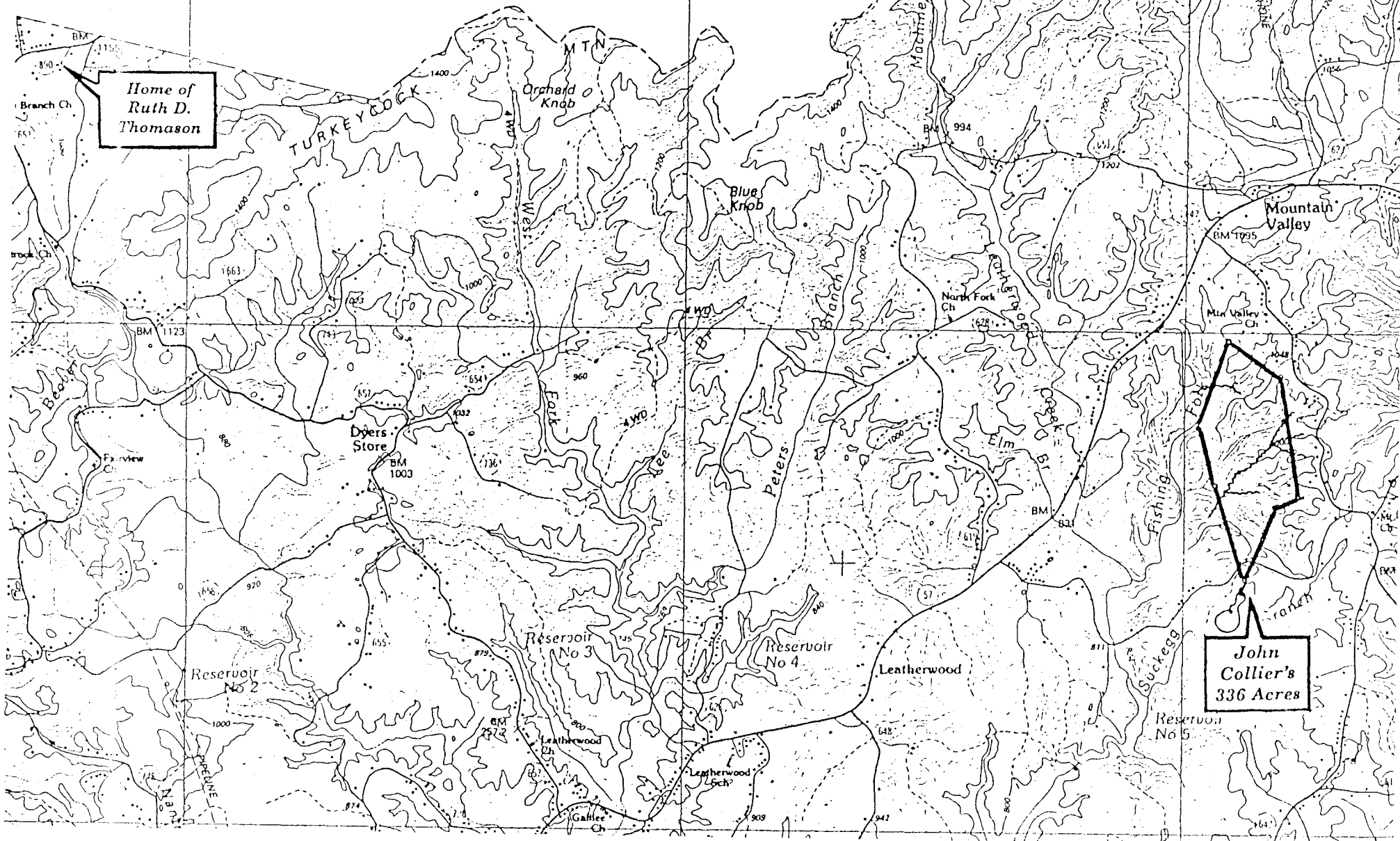
This indenture made this 3rd day of October and in the year of our lord one thousand seven hundred & Ninety-three between John Collier of the County of Pittsylvania of the one part And William Thomasson of the county of Henry of the other. Witnesseth: that the said John Collier for and in Consideration of the sum of ten Pounds Current money of Virginia to him in hand paid by the said William Thomasson before the signing and delivering of these presents the receipt whereof he the said John Collier doth hereby acknowledge himself fully satisfied, contented, and paid for a certain tract or parcel of land situate, laying, and being in the county of Henry on the branches of Leatherwood and is bound as follows: to wit, beginning at a corner pine then bounded by Griggs line thence down to a Spanish oak joining Gordon line from thence to a corner red oak then a new line to a chestnut from thence to the beginning, including one hundred acres more or less together with the maintenances thereunto belonging, together with all the woods, ways, water, watercourses, and meadow ground with all and singular the improvements and all profit claims, interest, and demand whatever to be held by him the sd William Thomasson in fee simple to be to the proper use and benefit of him the sd William Thomasson and I, John Collier do bind myself, my heirs, and does to maintain to sd William Thomasson a good lawful warrantable title to the above-mentioned land and promise from the claim or claims of any person or persons whatsoever against this my heirs and assigns forever and do bind myself, my heirs, and assigns to make to the sd william Thomasson any further writ or deed of conveyance as he the sd William Thomasson or his heirs shall lawfully require in the whereof I have hereunto set my hand and affixed my witness.

John <sup>his</sup>  
X Collier  
mark

Fleming Thomasson  
Benjamin Thomas  
James <sup>his</sup>  
X Thomasson  
mark

Current (1992) map of northeastern Henry County, Va.,  
showing the approximate location of the  
336 acres bought by John Collier in 1779, from which  
William Thomasson bought 100 acres October 3, 1793.

—by Kermon Thomasson, January 3, 1992



William Thomasson bought from John Collier, in 1793, 100 acres of land from this 336-acre tract on Leatherwood Creek surveyed for Collier in 1779.

Nov<sup>r</sup> 15 Surveyed for John Collier, by Transfer from Joseph Grayley 336 Acres of Land on the Branches of the Fishing Fork of Leatherwood Creek & Bounded as follows (to wit) Beginning at the said Grayleys Pointers in Adams Line thence with Grayleys New Line N15°E 160 p<sup>o</sup>. to a post oak N56°E 59 p<sup>o</sup>. to a post oak thence New Line N77°W 252 p<sup>o</sup>. crossing three Branches to a pine N65°W 132 p<sup>o</sup>. to a Chestnut tree S79°W 190 p<sup>o</sup>. to a pine S22°E 124 p<sup>o</sup>. crossing a branch to a white oak at Adams Geo. Line thence with it S76°E 200 p<sup>o</sup>. crossing two branches to the first Station.

Test John Dickenson *JHD*

